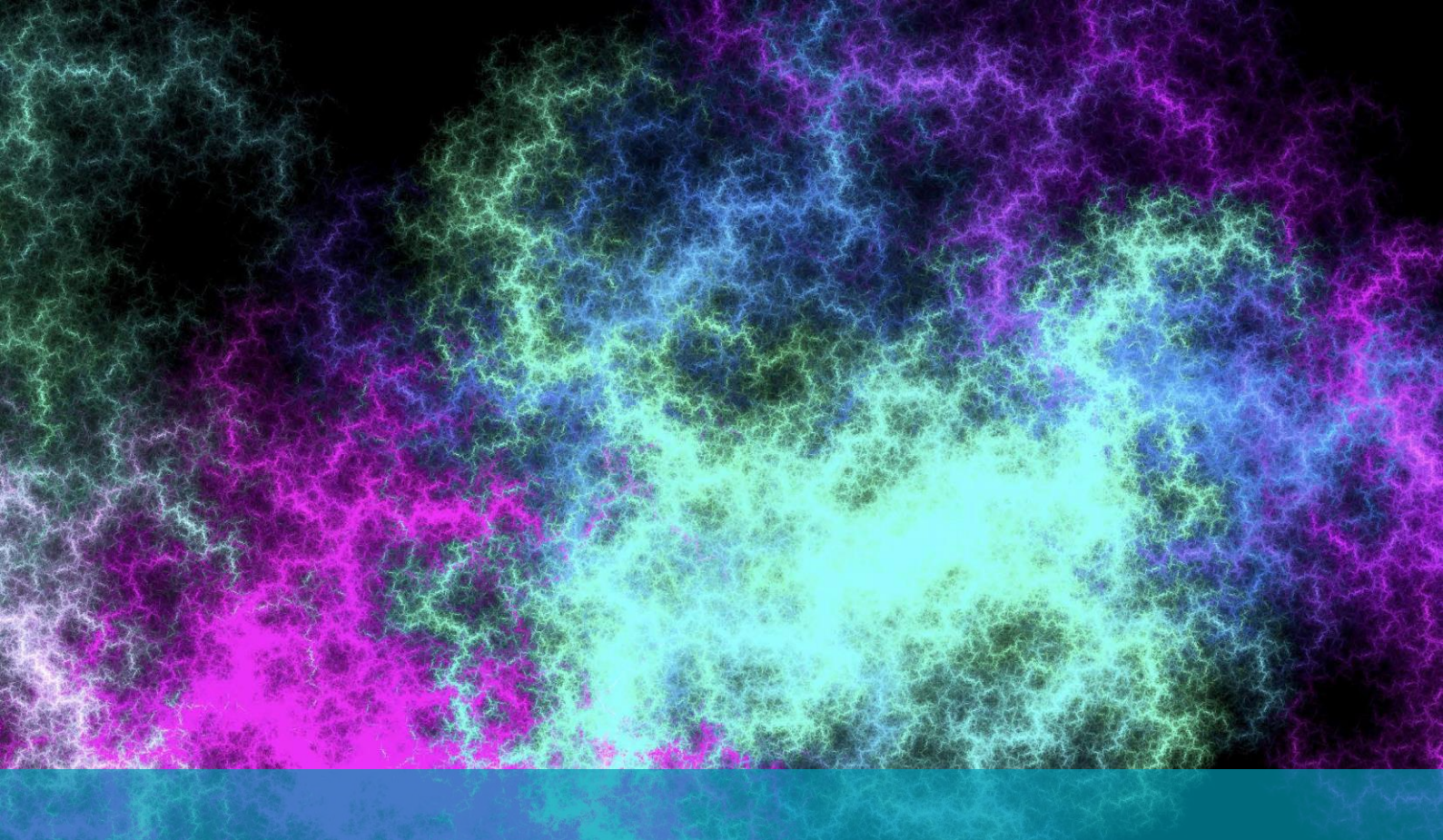




# Director of the NIHR GOSH Biomedical Research Centre



## Background

The NIHR GOSH Biomedical Research Centre (BRC), is the only NIHR-funded BRC focused on childhood diseases. It operates as a partnership between the GOSH NHS Foundation Trust (GOSH) and the Great Ormond Street Institute of Child Health as part of UCL (UCL GOS ICH).

GOSH has a unique population of patients and treats some of the most severe and complex diseases, often with a genetic basis. The joint institutions are known for the quality of their science, impact and influence, and the development of research and innovation that has changed patient care and outcomes. This was recently demonstrated through a Clarivate bibliometrics analysis that benchmarked GOSH and UCL GOS ICH against international comparator hospitals.

To stay at the forefront, the joint institutions need to continue to expand and change and therefore have a long-term ambition to become a 'health life-sciences park for severe childhood disease'. This will ensure that we continue to shape the landscape and maintain our position on the national and global stage as an epicentre for paediatric research.

The GOSH BRC Director will be a part of the paediatric research and innovation campus leadership and play a crucial role in shaping not only the future BRC, but also the broader vision and translational research hospital environment for paediatric research at GOSH and UCL GOSH ICH.d.



## The NIHR GOSH Biomedical Research Centre

Now in its 4th term (2022-2027) the NIHR GOSH Biomedical Research Centre (BRC) is based on a 5½ year NIHR award to a partnership between the GOSH NHS Foundation Trust and the Great Ormond Street Institute of Child Health as part of UCL. UCL also houses two further BRCs: UCL Hospital BRC and Moorfields BRC.

The core task of the BRCs is to develop translational medicine from bench to bedside. The GOSH BRC is the only BRC in the UK entirely focused on childhood diseases. In contrast to the 19 other BRCs, the GOSH BRC has a primary focus on methodological innovation, not on diseases or disease groups, reflecting our view that innovation in translational medicine is largely driven by emerging methodologies.

The BRC currently has £37 million over the 5.5 years, plus an additional £5 million from the NIHR to support capital equipment purchases over 3 years. It currently provides contributions to salaries for around 150 researchers including Doctors, non-clinical scientists and many wider healthcare professionals. This includes 24 clinical and non-clinical PhD studentships, plus both pre- and post-doctoral training fellowships.

## The five central themes funded by our GOSH BRC award are:

- **Gene, Stem and Cellular Therapies (GSCT)** - focuses on innovative gene, stem and cellular therapies that can overcome the limitations of current treatments for a wide range of children with rare inherited and acquired disorders.
- **Genomic Medicine (GM)** - uses cutting-edge genetic technology and novel computational methods of analysing large datasets to improve genetic diagnosis of rare and inherited conditions and deliver effective diagnosis and monitoring pre and postnatally to reduce the burden of childhood disease.
- **Accelerating Novel Therapies (ANT)** - develops and delivers innovative treatments that will overcome the paucity of precision therapies for rare childhood diseases.
- **Applied Child Health Informatics (ACHI)** - uses advanced data analysis methods, leveraging GOSH's electronic patient data, to improve the management of children with rare and/or complex disease and determine impact of interventions developed.
- **Tissue Engineering and Regenerative Medicine (TERM)** – develops pioneering techniques to repair and reconstruct tissues and organs to improve life expectancy and quality of life for children with tissue and organ failure.

These themes promote and develop new methodologies such as CRISPR-based and lentivirus-based or Adeno-associated-virus-based gene and cell therapies, emerging technologies for genomic analysis, RNA-based and small-molecule- or biologics-based therapies, bioengineering approaches to organ reconstruction and - replacement and advanced health informatics to tackle the mostly rare and frequently occurring genetic diseases afflicting children. This ambitious approach is based on continuous development of the experimental platforms, supported by ongoing NIHR funding. This has led to important advances including 11 new drugs developed or co-developed by GOSH BRC PIs obtaining FDA/EMA approvals over the previous five-year BRC award; the development of pioneering new treatments for haematological oncology; and the implementation of new genomic diagnostic services in the NHS.

Data science has emerged as a powerful driver of innovation over the last decade, and the GOSH Trust was the first UK trust to be awarded HIMSS level-7 data maturity status. Data science now permeates and drives approaches across all fields from genomics to lifetime perspectives of therapeutic interventions – topics tackled within our Child Health Informatics theme.

This thematic focus is underpinned by a BRC Central Developmental Hub which supports our successful Career Development Academy (CDA), and our commercial, public and patient engagement, communications, and EDI activities. The CDA supports translational researchers from the undergraduate stage through to postgraduate fellowships and has a strong track record of shaping the career development future translational scientists.

The GOSH BRC works closely with the NIHR-funded GOSH Clinical Research Facility (CRF) to deliver experimental drugs through innovative trials, which are partly investigator- and partly industry-driven. These trials ensure cutting-edge medical innovation is accessible to our patients. As the experimental medicine platform for both UCL GOS ICH and GOSH, the BRC is highly aligned with the strategies of its host institutions while remaining focused on its core mission of translational innovation.

In this fourth term, as part of a wider national collaboration – a National Paediatric Excellence Initiative (PEI) has been set up between GOSH BRC and children's hospitals in Birmingham, Sheffield and Liverpool. This PEI collaborates with specific BRC Themes to foster technology exchange, education and speedy translation of tests and therapies, while maximising access for patients. Together, these four partner Trusts provide for 40/51 highly specialised NHS commissioned services in England. To enable wider involvement of UK paediatric research units with our PEI, we encourage research collaborations, and we will deliver a National Conference for Paediatric Translational Medicine during this BRC term, to share research outputs and discuss strategic direction as widely as possible.



## The UCL Great Ormond Street Institute of Child Health (GOS ICH)

The UCL Great Ormond Street Institute of Child Health (UCL GOS ICH) is, with its clinical partner Great Ormond Street Hospital (GOSH), Europe's leading centre for child health research and education. Our mission is to maximise and advocate for the holistic health and wellbeing of children, young people and the adults they will become, through world-class research, education and public engagement.

[Our 2024-29 Strategy](#) has been informed by the insights gained from visits to other internationally excellent children's academic medical centres and by detailed discussions internally and with our external partners, including GOSH, GOSH Charity, the wider UCL community and funding bodies.

It sets out our ambitions for the next five years:

- **Excellence in research and education** by expanding our research and education portfolios.
- **Accelerating translation** by working in partnership with the NIHR GOSH BRC, Policy Research Units, UCL, UCLP, AHSC and hospital partners as well as charities to translate our research findings into clinical relevance.
- Continue to ensure **equality, diversity and inclusion** principles are embedded in all departmental processes and those of the Institute to build on an inclusive, supportive and fair working environment.
- Continue to **grow local, national and international partnerships**.
- Develop our **academic, teaching, and professional services staff** in becoming leaders of the future.
- Lead on the UCL **sustainability strategy**, encouraging and empowering our staff to do their part in co-creating a world where everyone and especially children and young people can live together within the capacity of the planet.

UCL GOS ICH is made up of five departments:

- Genetics and Genomic Medicine
- Population, Policy and Practice
- Developmental Biology and Cancer
- Developmental Neurosciences
- Infection, Immunity and Inflammation

With four cross cutting themes, Data Science, Mental Health, Stem Cell Biology and Global Health.

The **Zayed Centre for Research into Rare Disease in Children** opened in 2019 and is celebrating its 5th anniversary. The centre is a partnership between University College London, GOSH and GOSH Charity and is a hub of research excellence enabling hundreds of scientists and clinicians to more accurately diagnose, treat and cure young people with rare diseases. Bringing knowledge, technology, and patients together in one place accelerates the bench to bedside process of developing new treatments and cures for children with rare diseases both nationally and globally. The centre houses a state-of-the-art GMP facility.

## The Faculty of Population Health Sciences

The UCL Institute of Child Health is part of the UCL Faculty of Population Health Sciences and the School of Life and Medical Sciences. The 2022-27 strategy mirrors UCL's Grand Challenges in the areas of climate change, inequalities and mental health and wellbeing, with additional focus on health security, cancers, trials, data science and rare diseases. There are multiple alignments between the UCL GOS ICH academic strategy 2024 - 2029 and the Faculty's and UCL's strategy documents, as well as good alignment with the strategic direction of GOSH and the GOSH Charity. The Faculty Strategy 2022-27 highlights the crosscutting importance of taking a "life course" approach to population health. Childhood is a critical element of this approach; many of the factors that adversely impact on adult physical and mental health, such as inequalities and the impact of deprivation, can be best mitigated in early life.

The Institutes of Child Health, for Women's Health, of Cardiovascular Science, for Global Health, Clinical Trials & Methodology, Health Informatics and Population Health comprehensively address all these ambitions, and the health variations associated with them at a population level.



## Great Ormond Street Hospital for Children NHS Foundation Trust

Great Ormond Street Hospital (GOSH) is an international centre of excellence in child healthcare. GOSH is an acute specialist paediatric hospital with a mission to provide world-class care to children and young people with rare, complex and difficult-to-treat conditions. Since its formation in 1852, the hospital has been dedicated to children's healthcare and to finding new and better ways to treat childhood illnesses.

Great Ormond Street Hospital receives nearly 300,000 patient visits (inpatient admissions or outpatient appointments) every year (figures from 2018/19). Most of the children the hospital cares for are referred from other hospitals throughout the UK and overseas. There are 60 nationally recognised clinical specialities at GOSH; the UK's widest range of specialist health services for children on one site. More than half of our patients come from outside London and GOSH is the largest paediatric centre in the UK for services including paediatric intensive care and cardiac surgery. A new children's cancer centre is in development, due to open 2028.

Through carrying out research with the UCL GOS ICH, University of London and international partners, GOSH has developed a number of new clinical treatments and techniques that are used around the world.

GOSH is a member of University College London (UCL) Partners, joining UCL with a number of other hospitals – an alliance for world-class research benefitting patients.

In partnership with six other NHS trusts, GOSH is the lead provider for North Thames Genomic Laboratory Hub and Genomic Medicine Service Alliance Medicine Service.





## The Role of the BRC Director

The GOSH BRC Director will be a part of the paediatric research and innovation campus leadership and play a crucial role in shaping not only the future BRC vision, but also the broader vision and translational research hospital environment for paediatric research at GOSH and UCL GOSH ICH. They will work closely with the Director of the UCL GOS ICH and the GOSH Director of Research & Innovation.

The recently refreshed operating model for the hospital's Research & Innovation Directorate can be viewed [here](#). The BRC is the largest of the five central vertical pillars that underpin all our research and innovation infrastructure:

- The NIHR GOSH Biomedical Research Centre (BRC)
- Innovation, including early-stage innovation and the Gene & Cell Therapy Service
- The NIHR GOSH Clinical Research Facility (CRF),
- Non-medical research
- Core R&I infrastructure (GOSH and wider campus)

The initial appointment will be as Director Designate for 6 months, following which they will take on the full role of Director. The successful candidate will provide the lead in developing the bid for the renewal of the BRC, which we anticipate will be submitted in Autumn 2026. They will work closely with the R&I leadership across Great Ormond Street Hospital and the UCL GOS Institute of Child Health.

S/he will be an internationally excellent clinical academic, at Chair level, who is well-established and successful in an area of child health research relevant to rare disease in children, and the remit of the BRC. It would be expected they will have a general awareness of the national UK translational research landscape. It is also expected that s/he will have an excellent track record in supporting colleagues to become successful independent leaders.

## Key Responsibilities

- Providing local, national and international leadership in the delivery of the National Institute for Health Research, UCL GOS ICH and GOSH translational research agendas, developing further the international reputation of UCL and child health research and working closely with the Paediatric Excellence Initiative
- Working collaboratively with senior colleagues at UCL GOS ICH and GOSH, assist with the development and delivery of a vision and research strategy for the BRC aligned with the research strategy of UCL GOS ICH and GOSH to include the Clinical Research Facility
- Leading the team who will develop the bid for a new GOSHBRC
- Securing external funding to enhance the delivery of the BRC business plan and support the delivery of new objectives arising from the wider BRC agenda to enhance patient care through translational research
- Leading the delivery of high-quality outputs to inform the research base in child health and related disciplines
- Developing strong strategic relationships and alliances with internal and external partners for mutual benefit in the delivery of the BRC objectives and business plan, to include other academic institutions, charities and industry.
- Being accountable to the GOSH Research & Innovation Strategic Board and Trust Board and ICH Management Team for the overall delivery of the BRC
- Working closely with the international BRC External Advisory Board to shape the vision and strategy for the BRC
- Representing the NIHR GOSH BRC at National Directors' boards/steering committees acting in an Advisory capacity where required
- Being closely involved in continuing the patient and public involvement in further development of the BRC
- Leading engagement with external partners and regulators
- Mentoring junior researchers within the BRC
- Holding the leaders of the BRC themes to account with regard to strategic progress and direct change where required
- Being responsible for governance and risk management within the BRC
- Having overall responsibility for the BRC budget



## Person Specification

Candidates will be required to demonstrate experience and achievement against the following criteria:

### Qualifications/Certification

- Medical Degree
- Higher academic degree e.g. MD/MS or PhD, or evidence of equivalent level of attainment in research publications
- Accreditation by the relevant Royal College
- Eligible for GMC registration and entry on the appropriate GMC Specialist Register

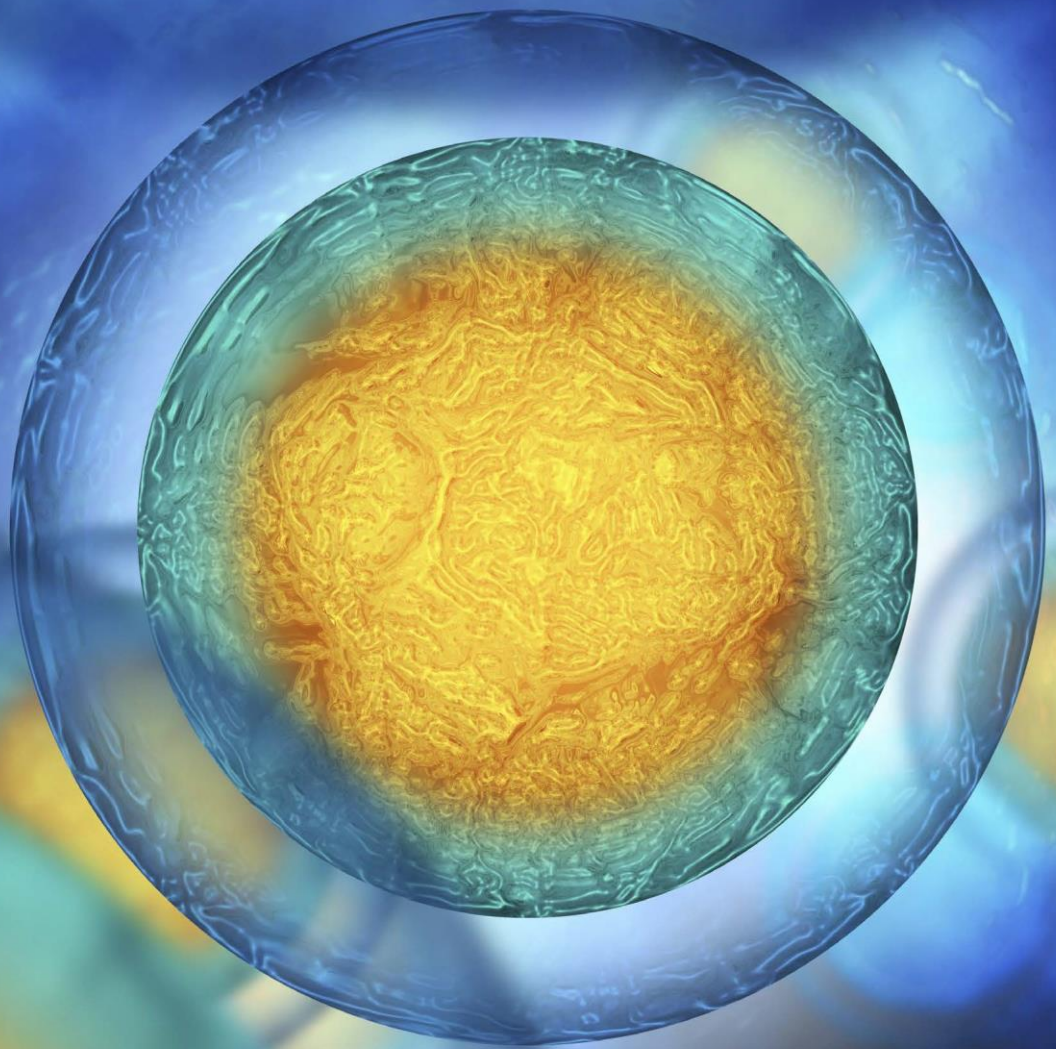
### Experience and Knowledge

- A record of achievement in leadership and managerial experience in an academic research environment and a demonstrable track record in influencing high level agendas
- Evidence of having developed and delivered a strategic vision while being accountable to a number of stakeholder partners
- An internationally outstanding profile in translational research
- A demonstrable track record of leading successful applications for major strategic grants
- A demonstrable record of managing projects and other workloads to meet timescales and deliverables
- Experience of financial management and controlling budgets, resources and funding
- A good understanding of health research in the UK, including the role and remit of the National Institute for Health Research, UK NHS, and University Sector; and an awareness of relevant government policy and planning documents; and the importance of clinical and research governance in clinical service delivery
- Experience of working within organisational partnerships to successfully create new clinical research models
- Demonstrable ability to recognise and develop new ideas and the ability to innovate within an academic context

- An excellent ability to develop strong networks and inspire confidence in internal and external partners
- Experience of successful liaison with industry partners and commercial collaboration including fundraising from philanthropic and/or non-academic bodies
- An understanding of the processes of knowledge transfer and translation

### Skills and Qualities

- A collegiate, collaborative and approachable style, fostering two way communication and effective team working and managing relationships with collaborators and other teams to deliver results
- Ability to enthuse, inspire and communicate a strategic vision
- Excellent written and verbal communication skills
- Strong analytical and decision making skills, including the ability to identify, manage and minimise risk while maximising opportunities
- Excellent leadership, negotiating and influencing skills; demonstrable ability to lead, and participate in, a team
- The highest ethical and professional standards
- Effective self-management and focus
- An entrepreneurial and innovative approach



## Appointment Process and How to Apply

Applications for the position should be made online via the website of our executive search partners Society at [www.society-search.com/roles/director-of-the-nihr-gosh-brc/](http://www.society-search.com/roles/director-of-the-nihr-gosh-brc/). Your application should include:

- a curriculum vitae
- a statement of research interests and plans
- the names and addresses of three referees (including at least one referee based outside the candidate's own country of residence)
- details of current salary.

The deadline for receipt of applications is midday (GMT) on Monday 10<sup>th</sup> March 2025. Candidates seeking an informal preliminary conversation can contact Society via [brc@society-search.com](mailto:brc@society-search.com)

The final appointment will be made subject to satisfactory references and DBS check. The appointed candidate will be offered a salary that is commensurate with their experience and the seniority of their new role.

*GOSH and UCL are committed to ensuring that anyone can access the application processes. This includes people with hearing, sight, mobility, and cognitive impairments. Should you require access to this document in an alternative format, wish to apply in a different format, or need any other reasonable adjustments made for you (including at interview), please let us know.*



# University College London

UCL is a radically different university. Founded in 1826 in the heart of London, it was the first university in England to welcome students of any religion and the first to welcome women on equal terms with men. Today, UCL has more than 50,000 students and 16,000 staff from over 150 countries and is consistently ranked as one of the top ten higher education institutions in the world.

UCL champions innovation, creativity, and cross-disciplinary working in its teaching and research. From the start, it opened higher education to women and students from a wide range of backgrounds who had previously been excluded, and this commitment to expanding diversity and inclusiveness remains fundamental to its work. The courageous attitude and disruptive spirit of UCL's founders is still alive today.

UCL was recently named University of the Year 2024 by The Times and Sunday Times Good University Guide. Its progressive approach to teaching and research, its world leading academics, its curious students, and its outstanding staff continually pursue excellence, break boundaries, and make an impact on real world problems.

## London's Global University

UCL has a progressive and integrated approach to its teaching and research. The University champions innovation, creativity, and cross-disciplinary working. It teaches its students *how* to think, not *what* to think, and sees them as partners, collaborators, and contributors.

UCL has a proud heritage of disruptive thinking, a reputation for game-changing research, and a unique multidisciplinary approach to problem solving. Its excellence extends across all academic disciplines; from one of Europe's largest and most productive hubs for biomedical science interacting with several leading London hospitals, to world-renowned centres for architecture (UCL Bartlett) and fine art (UCL Slade School).

At 1:10.1, UCL has one of the best staff to student ratios of any public UK university, enabling small class sizes and outstanding individual support. It is also one of the leading institutions at the heart of the UK's success globally in research and innovation. It was 2<sup>nd</sup> in the UK for research power (REF 2024) and top for research power in medicine, health and life sciences and social sciences.

## Equality

UCL is proud of its longstanding commitment to equality and to providing a learning, working and social environment in which the rights and dignity of its diverse members are respected.

Some highlights below:

- Sabbatical Leave following maternity – UCL provides one term of sabbatical leave without teaching commitments for research-active academics returning from maternity, additional paternity, adoption or long-term carer's leave. This support for returners enables staff to more quickly re-establish their research activity.
- Achievement of 51 Athena SWAN awards, including five gold and 20 silver awards.

## Location and Working Environment

Based in Bloomsbury, UCL is a welcoming, inclusive university situated at the heart of one of the world's greatest cities. UCL's central campus is spread across approximately three square kilometres of central London and is within easy reach of Euston, King's Cross and Marylebone mainline stations, the Eurostar terminal at St Pancras and the following Underground stations – Euston Square, Warren Street, Goodge Street and Russell Square. Road connections to the M1 and M40 motorways give easy access.

For more information, please visit [www.ucl.ac.uk](http://www.ucl.ac.uk)